

BUSINESS FIRST

YOUR SPACE TO WORK

PRESTON



Preston

Business First Preston provides modern industrial spaces in the dynamic Millennium City, which is already home to prominent companies such as Bupa, DPD, Jaguar, and Land Rover, among others.

The development boasts a strategic location situated only half a mile from junction 31a of the M6 motorway and is in close proximity to various rail and bus transport links.





Key features



Free Parking



Kitchenette



WC



Street level access



Water on separate meters



CCTV



Office space



Floor to roof glazed offices



EPC rated 'A'



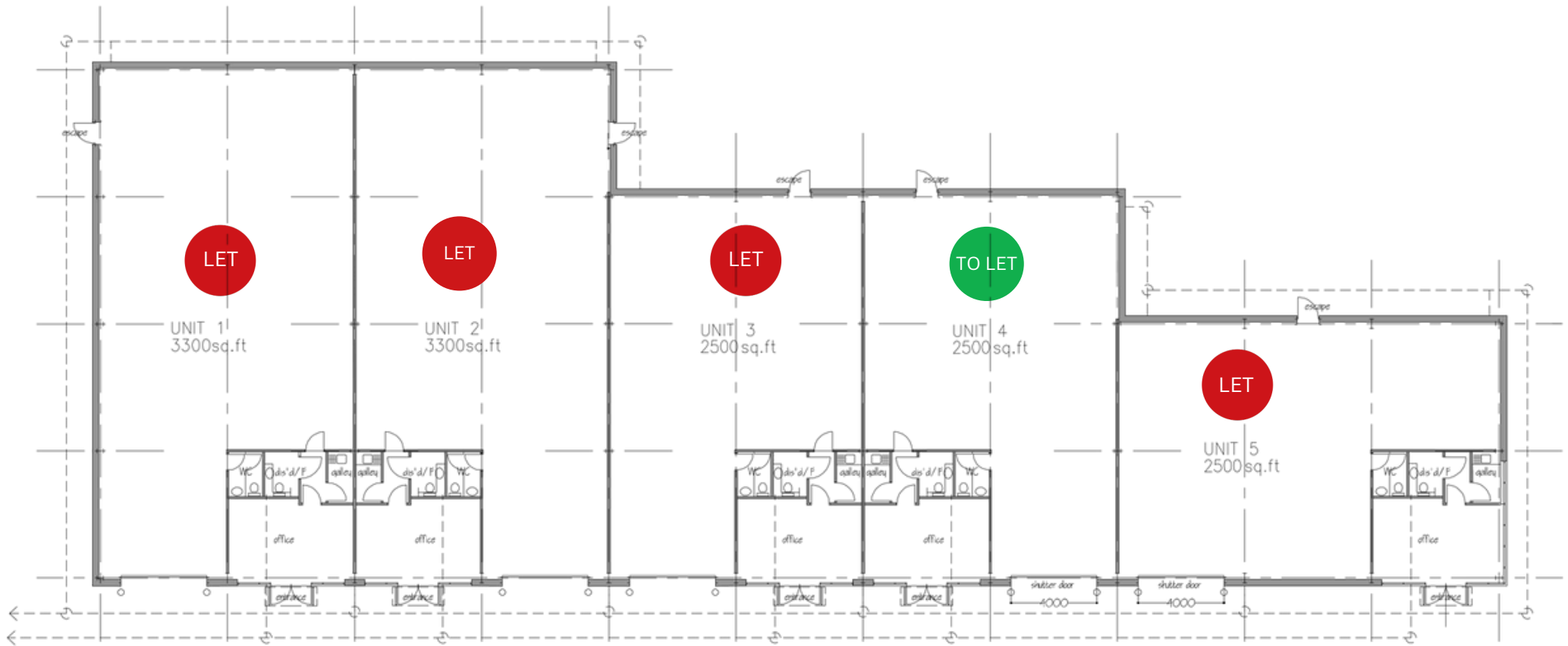
Large storage area



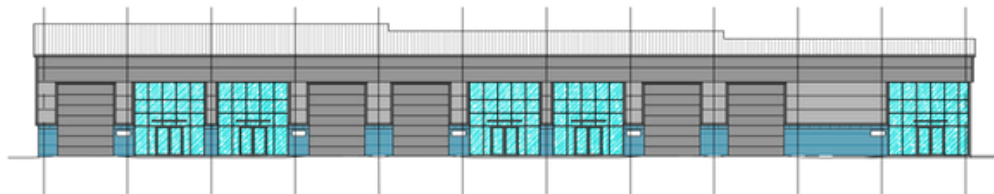
Electricity on separate meters



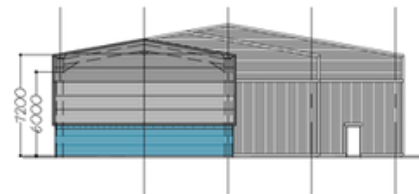
Double height roller shutter door



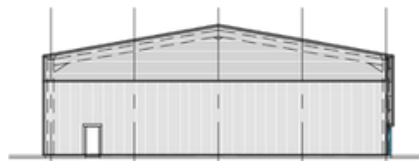
GROUND FLOOR PLAN 1 : 100



NORTH WEST ELEVATION 1 : 200



NORTH EAST ELEVATION 1 : 200



SOUTH WEST ELEVATION 1 : 200



SOUTH EAST ELEVATION 1 : 200

Price List

Unit number	Size Sq/Ft	Price per month	Estate charge	Parking
Unit 1	LET	LET	LET	LET
Unit 2	LET	LET	LET	LET
Unit 3	LET	LET	LET	LET
Unit 4	2,500 Sq/Ft	£2,990.00 + VAT	£120.57 + VAT	INCLUDED
Unit 5	LET	LET	LET	LET

Special Offer: 50% off for the first 3 months - Terms & conditions apply.



Contact:
Hannah Eastham

Tel:
01253 599 599

Mobile:
07939 963 334

Web:
businessfirst.com

Email:
preston@businessfirst.com

Address:
Millennium Road
Preston
PR2 5BL